

EPIC

Recovery Program Details

The EPIC Recovery Program is a 24-month, evidence-based program designed to provide help and services for patients experiencing psychosis. Each situation is approached with respect for the patient and the understanding that **recovery is possible**.

1 MEDICAL TREATMENTS

Treatment of symptoms with medication to allow therapy to be effective.

2 EDUCATION

Education for the individual and family on living with the illness.

3 SOCIAL

Building and renewing confidence to face each day.

WHAT DOES THE TREATMENT COST?

All of the EPIC services are FREE and include:

- Patient interventions and treatments
- Psychiatric services
- Medication management
- Care coordination
- Assistance with employment and education

A healthier mind.
A better you.



Life Management Center
Of Northwest Florida Inc.

525 East 15th Street
Panama City, FL 32405

lmccares.org

REACH
OUT:

850-522-4485

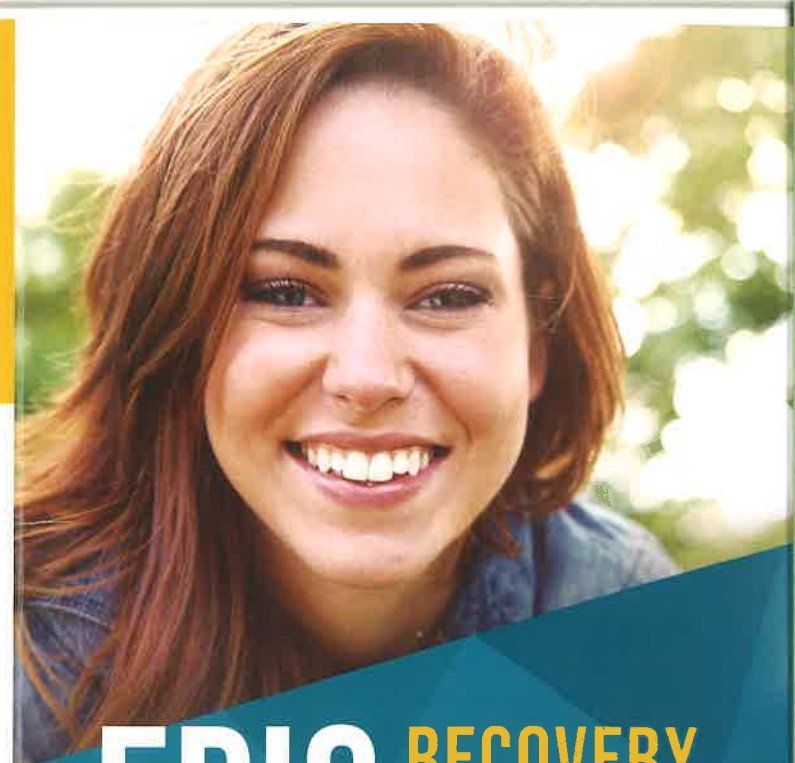
epicprogram@lmccares.org

THE EPIC PROGRAM

is exclusive to Life Management Center and was one of the first two facilities in the State of Florida offering this unique approach to patient care.

Sponsored by:

Life Management Center of Northwest Florida, Inc.,
Northwest Florida Health Network, and the State of Florida,
Department of Children and Families



EPIC RECOVERY PROGRAM
PSYCHOSIS

HOPE FOR THOSE EXPERIENCING:

Hallucinations

Delusions

Mood Changes

Decline in Self Care

Withdrawal from Others

Call for hope.

850-522-4485



EARLY PSYCHOSIS INTERVENTION & CARE

EPIC Recovery Program



Identifying THE SYMPTOMS

Determining if a loved one needs professional attention can be difficult. Symptoms may seem minor or insignificant at first and written off as “just a phase”. If you’re concerned your loved one may be experiencing psychosis, common symptoms to look for include:

- 📌 **Serious Changes in Emotion & Motivation**
More depressed or anxious than usual.
- 📌 **Severe Changes in Thinking & Perception**
Difficulty maintaining concentration or expressing that others around them have changed. He or she may also respond to hallucinations by talking to someone that others cannot see or hear.
- 📌 **Significant Changes in Behavior**
Changes in sleep patterns, social interaction, school performance or ability to work.

Those suffering from psychosis usually experience it in episodes. The signs and symptoms vary by each person so the changes in behavior must be considered against that person’s typical patterns.

Treatment ELIGIBILITY

Psychosis develops in the late teen years or early adulthood. You may be a candidate to participate in the EPIC Recovery Program if you:

- Live in Bay County
- Are between the ages of 15–35
- Have received less than 12 months of treatment for psychosis

Understanding PSYCHOSIS

Psychosis is a general term used to describe a severe mental condition where a person has lost some contact with reality. We understand that hearing the term may seem overwhelming but with early detection, treatment and a strong support system, recovery is possible.

Some disorders include:

- Schizophrenia
- Schizoaffective Disorder
- Brief Psychotic Disorder
- Some Severe Bi-Polar Disorders

Early detection leads to better outcomes.

“ I feel a lot more confident about what I can do, what I have the power to change, and what I can’t.”